

# Artificial Eye and Visual Aids

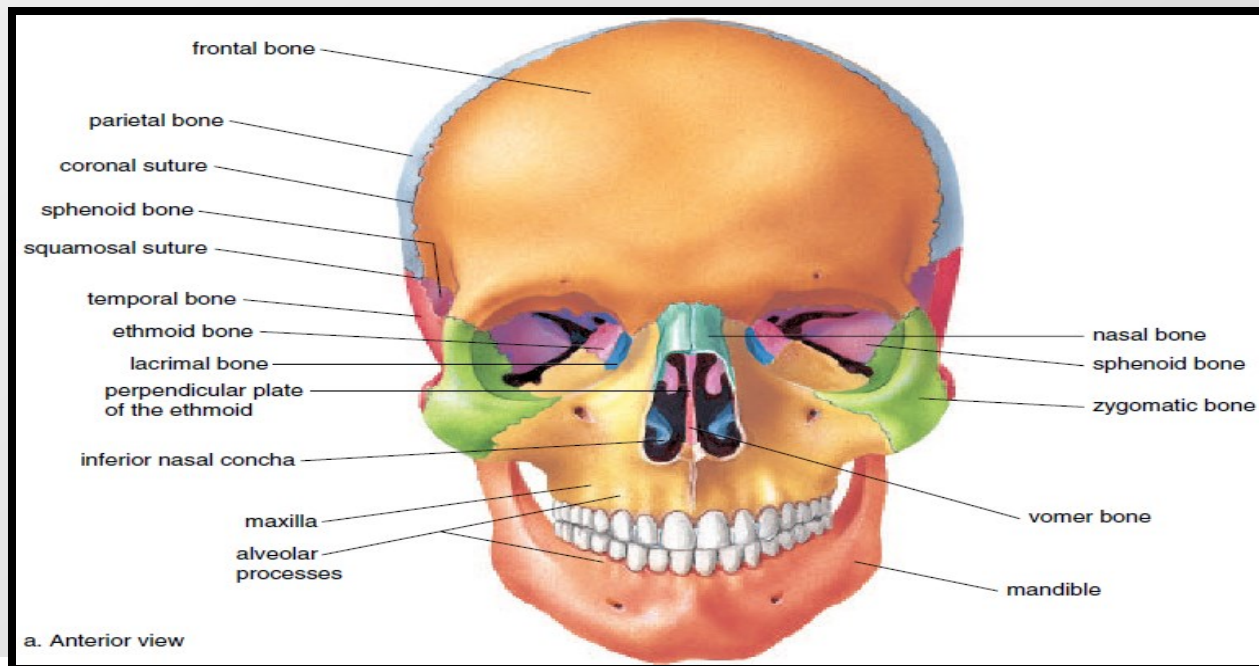


نظام المحاضرات الالكترونية

# Anatomy of the Face

## ❖ The skull:

- The skull is formed by the *cranium* and the *facial* bones



# Anatomy of the Face

## ❖ Bones of the Cranium:

- Frontal Bone
- Parietal Bones
- Occipital Bone
- Temporal Bones
- Sphenoid Bone
- Ethmoid Bone



نظام المحاضرات الالكترونية

# Anatomy of the Face

## ❖ Bones of the Face

- Maxillae bone
- Palatine Bones
- Zygomatic Bones.
- Lacrimal Bones
- Nasal Bones
- Vomer Bone
- Inferior Nasal Conchae
- Mandible



# Causes of the Eye and Facial Damage

## ❖ CAUSES OF THE FACIAL DAMAGE:

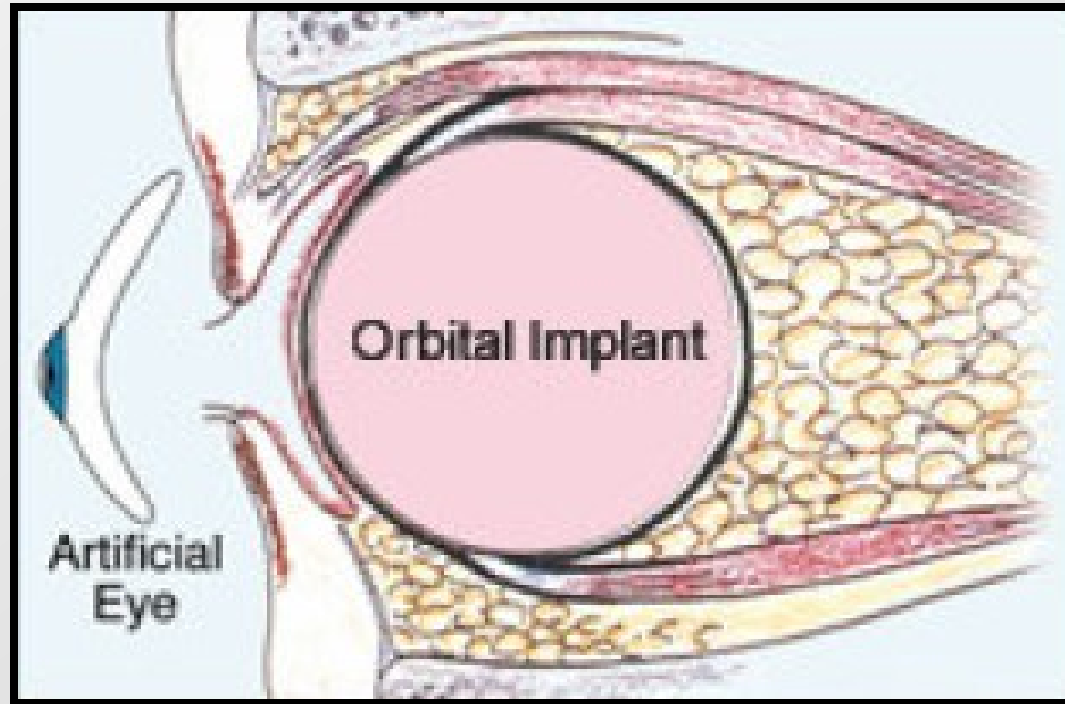
- Soft Tissue Injuries
- Facial Bones Fractures
- Blowout fracture

## ❖ CAUSES OF EYE DAMAGE:

- Disease
- Injury
- Lifestyle



# ARTIFICIAL EYES



نظام المحاضرات الالكترونية



# REMOVAL OF AN EYE

❖ **Acquired effect of eye removal involve:**

- Evisceration
- Enucleation.
- Exenteration

نظام المحاضرات الالكترونية



# Ocular prosthesis



نظام المحاضرات الالكترونية





# HYDROXYAPATITE



نظام المحاضرات الالكترونية



# Hydroxyapatite Ocular Implants (Bio-Eye Ocular Implant)

The Bio-eye ocular implant offers many less obvious benefits:

- It reduces implant migration and extrusion
- prevent drooping of the lower lid.
- can eliminate the need to choose between further corrective surgery and an unsatisfactory appearance.



نظام المحاضرات الالكترونية